



**PUBLIC MEETING  
PRESENTATION**

**OCTOBER 8, 2013**

**JERSEY CITY UNIVERSITY – GOTHIC LOUNGE**

# Hudson-Bergen Light Rail Route 440 Extension – Presentation Overview –

- ▶ Project Overview
- ▶ Environmental Analysis Conclusions
- ▶ Next Steps

## Project Overview – Early Planning Activities –

- ▶ Project Initiation: Winter 2010
- ▶ Develop and Refine Alternatives: Spring/Summer 2010
- ▶ Alternatives Evaluation: Fall 2010/Winter 2011
- ▶ Select Locally Preferred Alternative: Summer 2011

# Project Overview

## – Project Approval Process–

### Adopt LPA

- Alternatives development and analysis complete - February 2011
- NJ TRANSIT Board Approval of Locally Preferred Alternative – May 2011

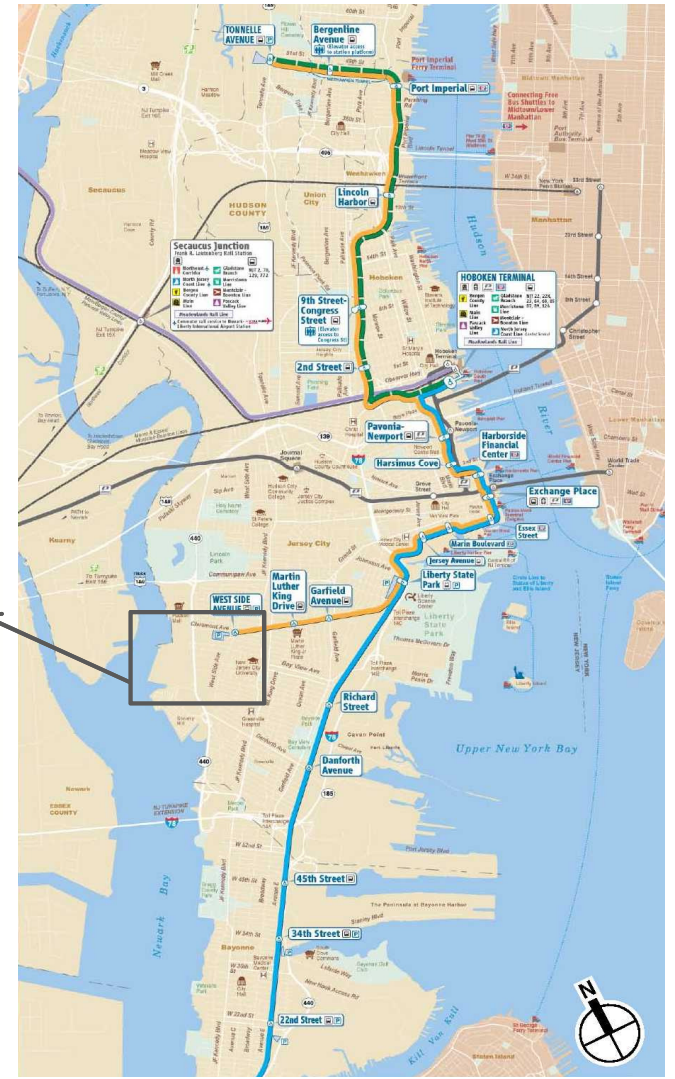
### NEPA

- Prepare Environmental Assessment in accordance with the National Environmental Policy Act (NEPA)
- Solicit and accept public comments (through October 21, 2013)
- FTA issue environmental approvals

### Design and Construction

- Property acquisition for alignment extension
- Ongoing coordination with Jersey City and other stakeholders
- Final design
- Construction

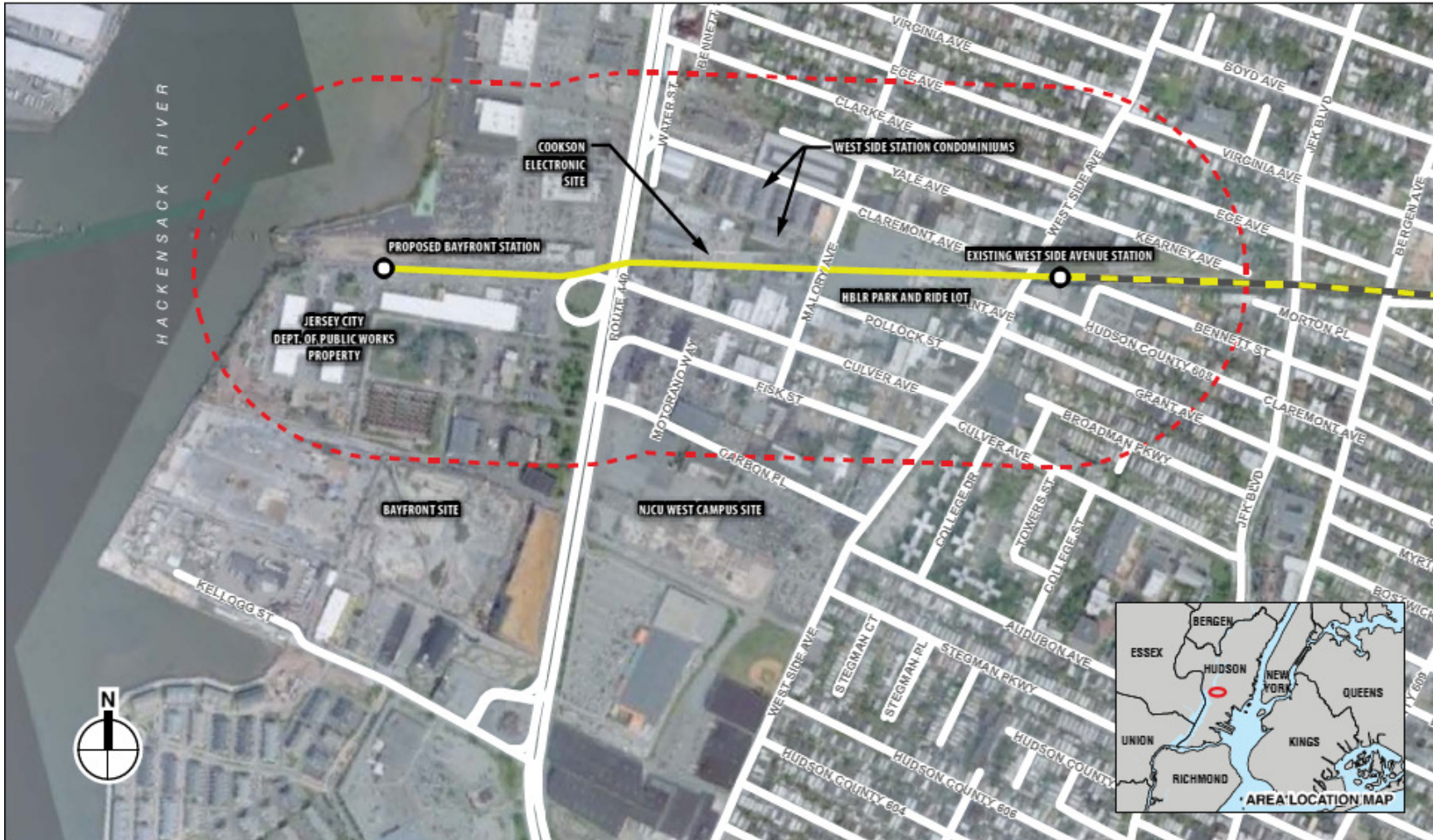
# Project Overview – Project Location –



# Project Overview

## – Project Location and Study Area –

9.11.12



- Proposed HBLR Route 440 Extension
- Existing HBLR West Side Avenue Branch
- Environmental Assessment Study Area Boundary (1000-Foot Perimeter)

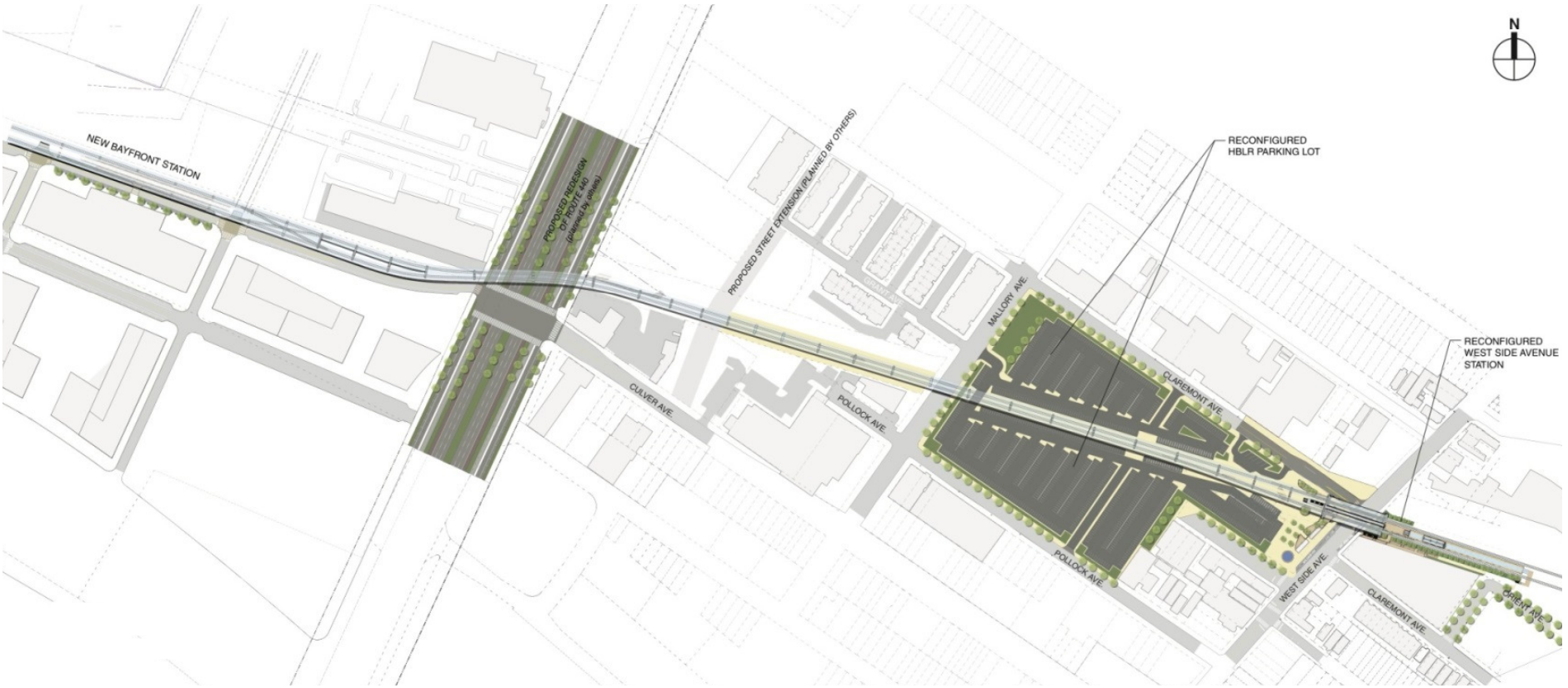


# Project Overview

## – Project Location and Study Area –



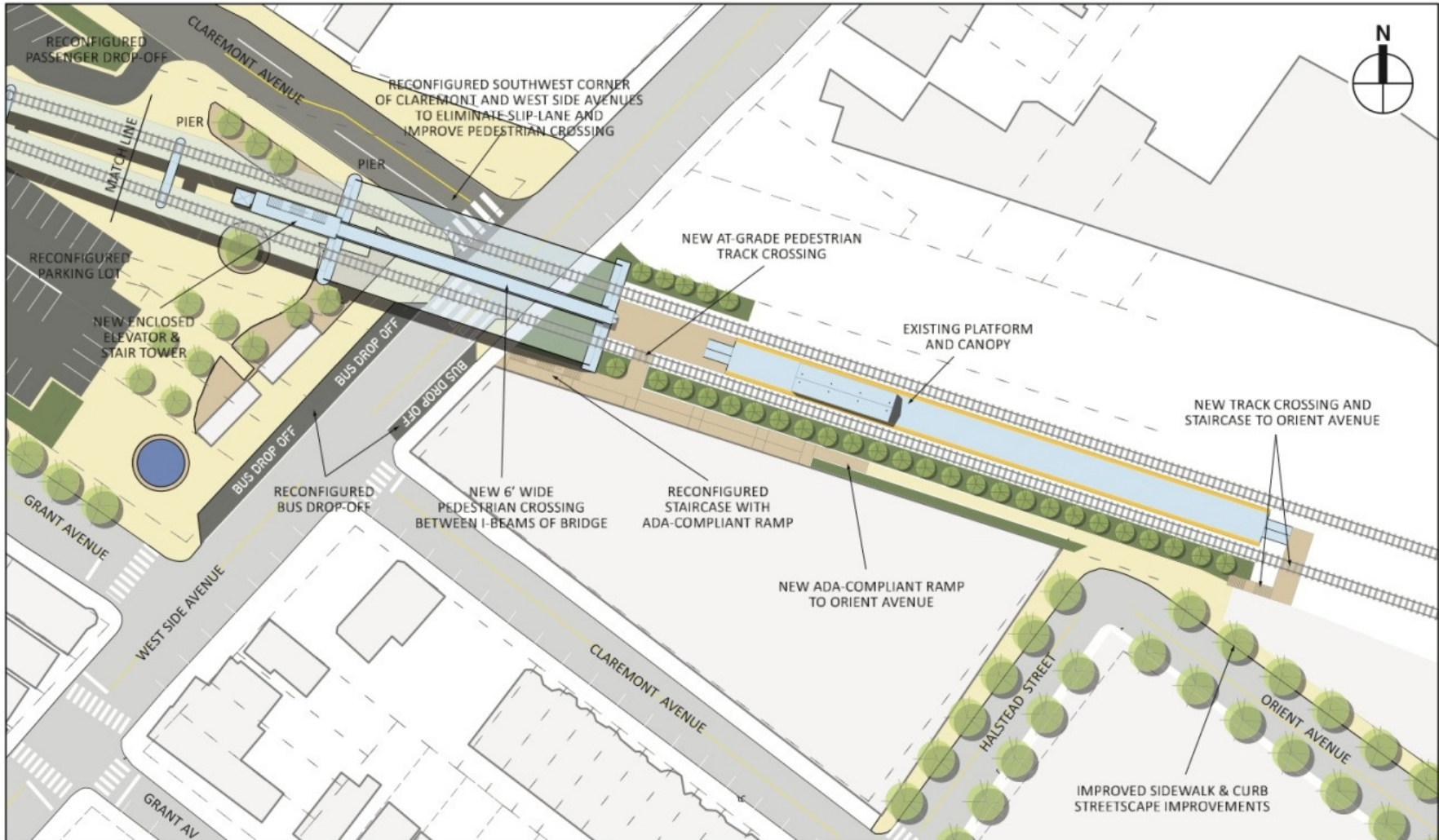
# Project Overview – Proposed Alignment –





# Project Overview

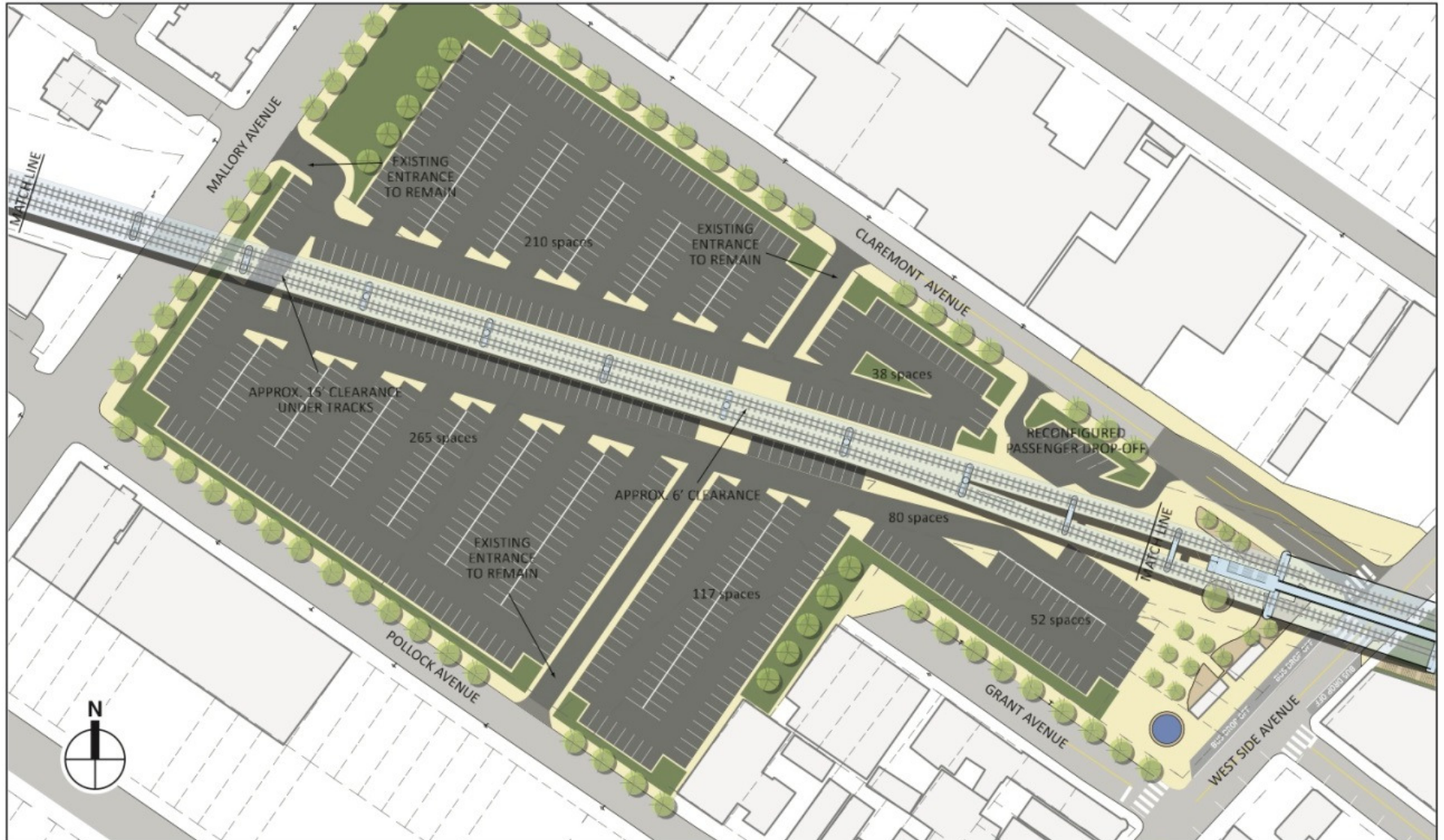
## – Alignment at West Side Avenue –



0 100 FEET  
SCALE

# Project Overview

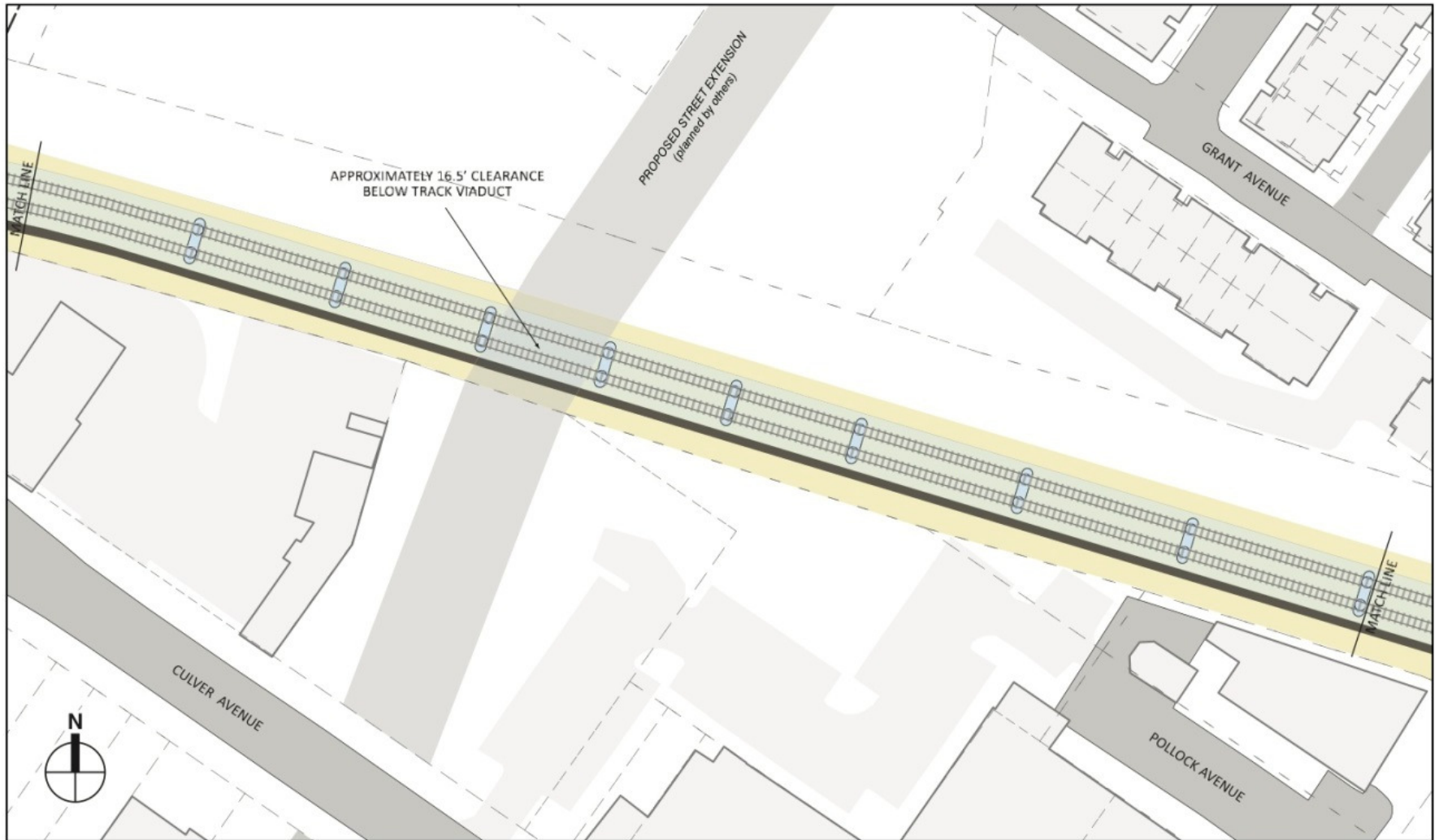
## – Alignment through Station Parking Lot –



0 200 FEET  
SCALE 10

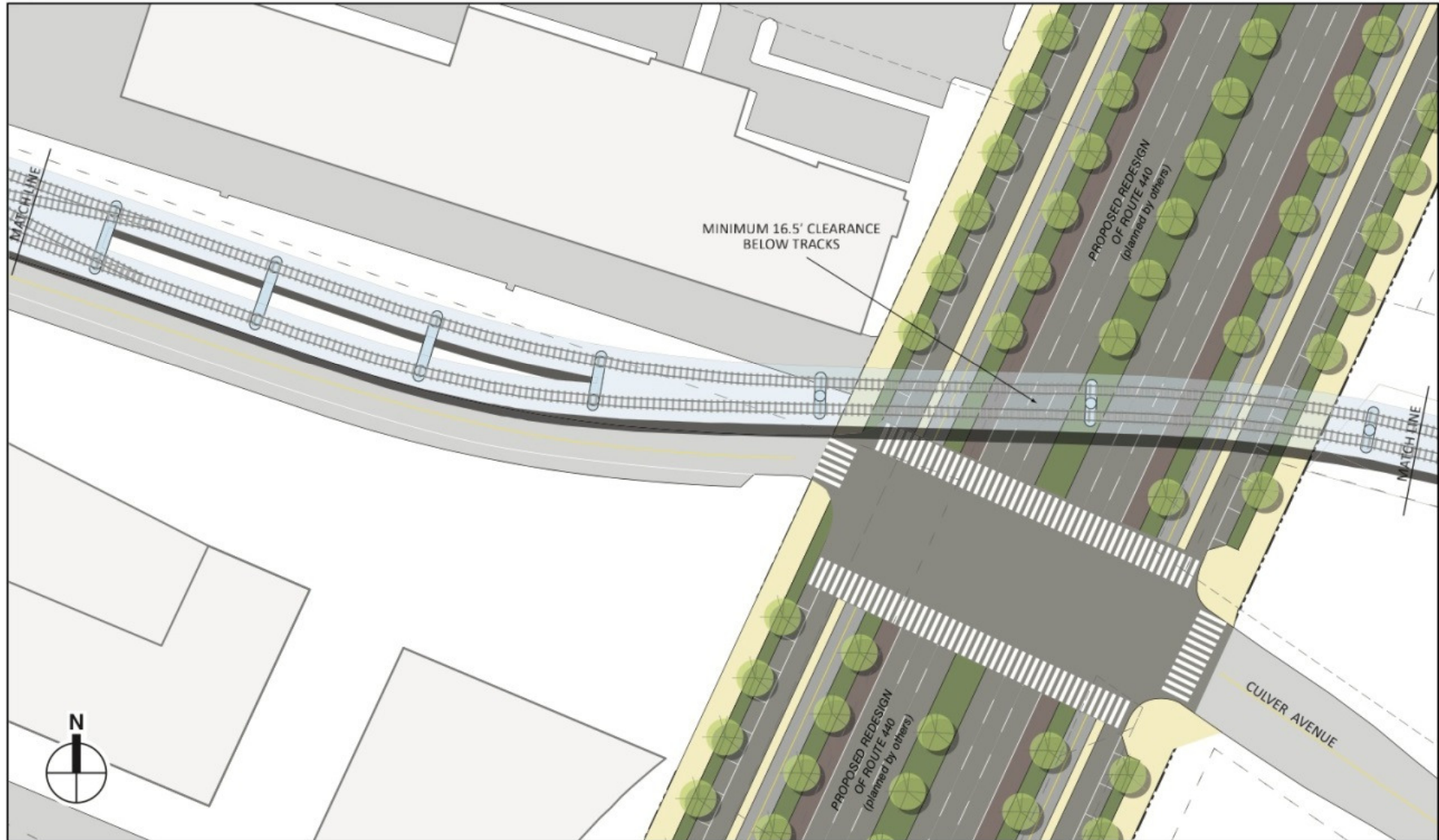
# Project Overview

## – Alignment West of Mallory Avenue –



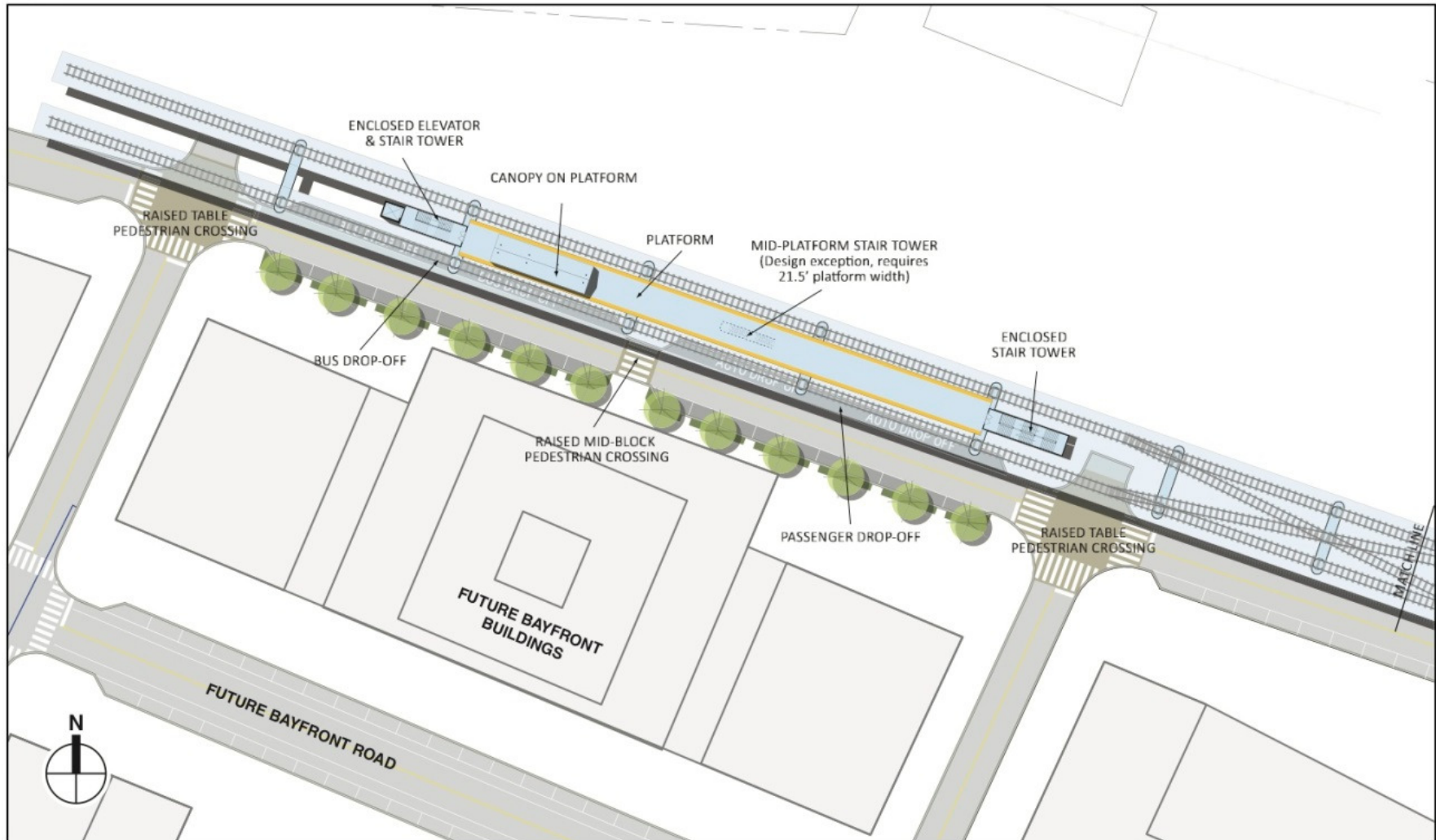
# Project Overview

## – Alignment at Route 440 –



0 100 FEET  
SCALE

# Project Overview – Alignment at Bayfront –



0 100 FEET  
SCALE

# Project Overview

## – Alignment at Mallory Avenue –



# Project Overview

## – Alignment at Mallory Avenue –



# Project Overview

## – Alignment at Mallory Avenue –





## Environmental Analysis – Conclusions of EA –

Topic	No Impact	No Impact with Conditions
Social Conditions Land Use, Zoning, Public Policy, Community Facilities and Parks	●	
Property Acquisition and Displacement	●	
Visual Conditions	●	
Historic Resources		●
Archaeological Resources		●
Traffic and Parking	●	
HBLR Operations	●	
Noise and Vibration	●	
Infrastructure / Utilities		●
Hazardous Materials		●
Natural Resources	●	
Construction Impacts		●

# Environmental Analysis – Historic Resources –



- ▶ Board of Education building (former Candy Factory) is eligible for National Register of Historic Places.
- ▶ No physical changes to the building as a result of new station access features.
- ▶ Final design will be sensitive to historic building and will be reviewed by NJ Historic Preservation Office.

# Environmental Analysis – West Side Avenue: Existing Station –

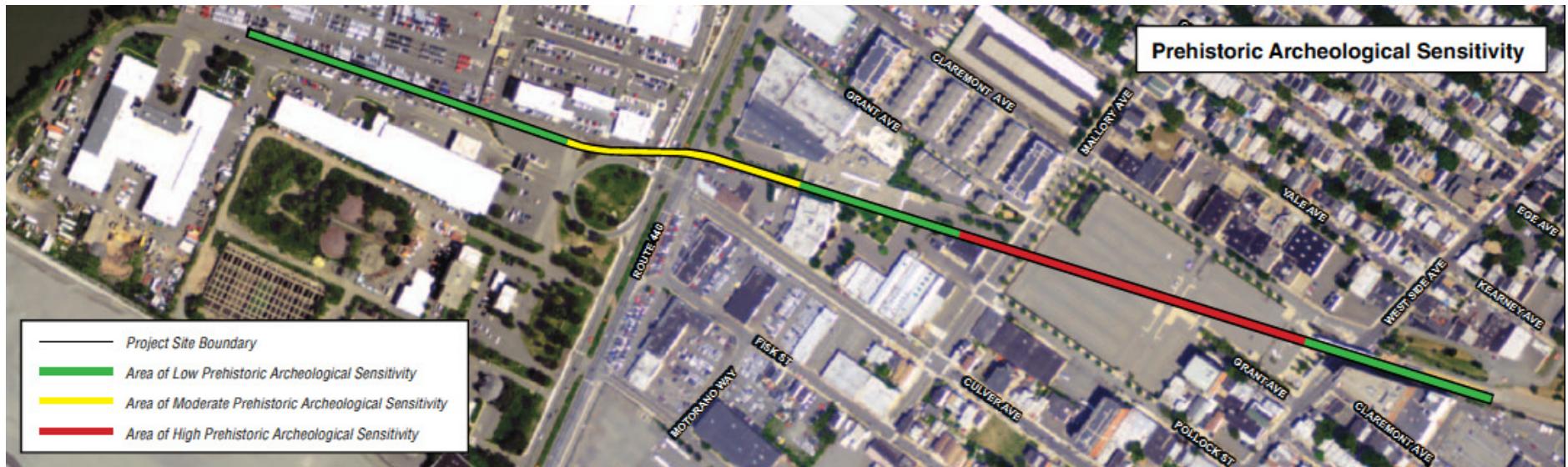


# Environmental Analysis

## – West Side Avenue: New Station –

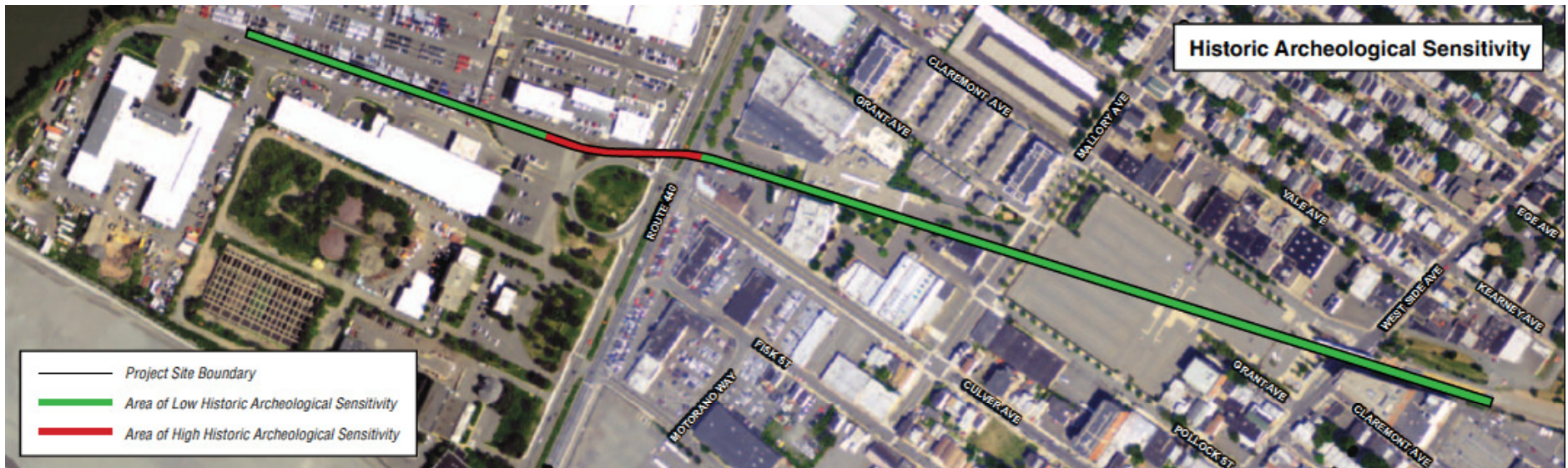


# Environmental Analysis – Archaeological Resources –



- ▶ The Project's Programmatic Agreement sets forth the measures to be taken to protect archaeological resources.
- ▶ During final design, borings will be evaluated by an archaeologist to determine if intact soils may remain in areas identified as having "moderate" or "high" sensitivity for prehistoric resources; if so, an archaeological survey will be undertaken before construction.

# Environmental Analysis – Archaeological Resources –



- ▶ The Project's Programmatic Agreement sets forth the measures to be taken to protect archaeological resources.
- ▶ In the area with "high" sensitivity for historic-period resources, construction will be monitored by a professional archaeologist for evidence of those resources – the former Morris Canal, a former Standard Oil pipeline, a former water pipeline, and a 19<sup>th</sup> century building.

## Environmental Analysis – Noise and Vibration –

- ▶ An assessment of noise and vibration was conducted in compliance with FTA methodologies.
- ▶ Noise measurements were taken at West Side Station condominiums and on Grand Avenue.
- ▶ Future changes in noise levels associated with the project would be imperceptible.
- ▶ Future vibration associated with the project would not result in damage to nearby buildings or annoy nearby residences.

## **Environmental Analysis – Infrastructure / Utilities –**

- ▶ Existing underground utilities near Route 440 may have to be relocated before construction of the project.
- ▶ Existing overhead power lines along Mallory Avenue and Route 440 may have to be relocated before construction of the project.
- ▶ Utility relocations will be undertaken in coordination with utility owners to avoid service disruptions.



## **Environmental Analysis – Hazardous Materials –**

- ▶ Industrial activities once located in the area may have left hazardous materials in the soils in the project area.
- ▶ Environmental sampling of soils and groundwater will be conducted before construction of the project.
- ▶ The results of the sampling will be used to develop a Materials Management Program to be followed during construction.

## Environmental Analysis – Construction Impacts –

- ▶ Construction duration – 36 to 42 months
- ▶ Temporary street closures at West Side, Mallory, Claremont, and Pollock Avenues for deliveries and viaduct construction.
- ▶ Two lanes will be maintained in each direction on Route 440 during peak times.
- ▶ Construction generally during daytime hours, but possible overnight construction work for utility relocations and viaduct construction across Route 440.
- ▶ Traffic, dust, and noise management measures to be followed.

# Next Steps

## – Project Approval Process –

### Adopt LPA

- Alternatives development and analysis complete - February 2011
- NJ TRANSIT Board Approval of Locally Preferred Alternative – May 2011

### NEPA

- Prepare Environmental Assessment in accordance with the National Environmental Policy Act (NEPA)
- Solicit and accept public comments (through October 21, 2013)
- FTA issue environmental approvals

### Design and Construction

- Property acquisition for alignment extension
- Ongoing coordination with Jersey City and other stakeholders
- Final design
- Construction

## Next Steps

### – Document Viewing Locations –

- ▶ **Project Website:** [www.hblr440.com](http://www.hblr440.com)
- ▶ **In Person:**
  - ▶ Jersey City Division of Economic Development  
30 Montgomery Street, Jersey City
  - ▶ Jersey City Public Library, West Bergen Neighborhood Branch  
476 West Side Avenue
  - ▶ Jersey City Public Library, Greenville Regional Branch  
1841 John F. Kennedy Boulevard West
  - ▶ NJ TRANSIT Corporation Headquarters  
One Penn Plaza East, Newark
  - ▶ Federal Transit Administration Region 2 Office  
One Bowling Green, Room 429, New York, NY

## Next Steps – Submitting Comments –

- ▶ **Project Website:** [www.hblr440.com](http://www.hblr440.com)
- ▶ **In Person:** fill out a comment card tonight
- ▶ **By Mail:**  
Jeremy Colangelo-Bryan  
NJ TRANSIT  
One Penn Plaza East  
Newark, NJ 07105

**All comments due by 5 PM on October 21, 2013**



*H U D S O N - B E R G E N*  
**L I G H T R A I L** <sup>SM</sup>

---



For more information, please visit the project website:

[www.hblr440.com](http://www.hblr440.com)